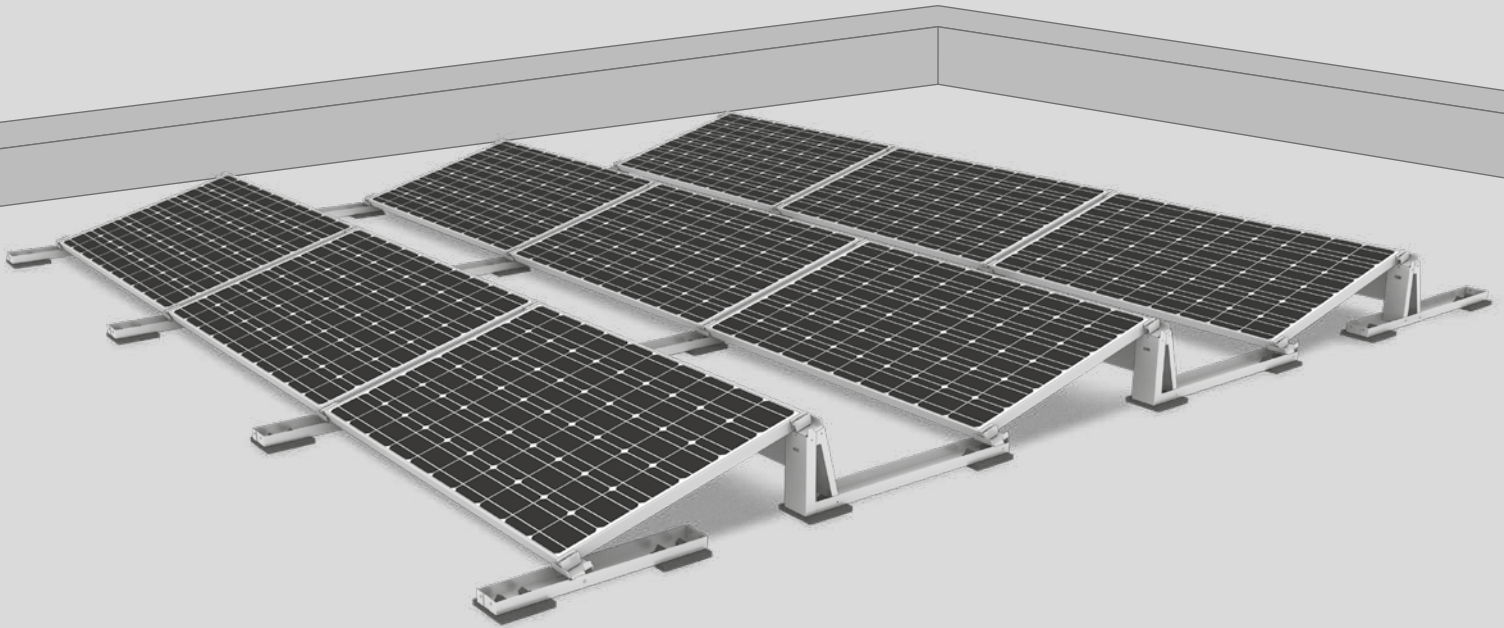


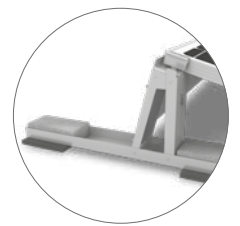
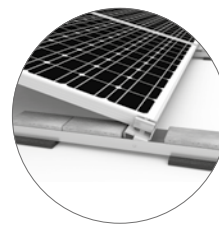


S-Rock 15° System

The solution for quick single-sided elevation

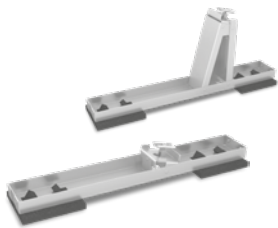


- ▶ Ultra quick and easy mounting
- ▶ One component with integrated ballast tray and cable management solution
- ▶ No additional pre-assembly
- ▶ One universal clamp for all modules
- ▶ Aerodynamically optimised as a result of wind tunnel testing

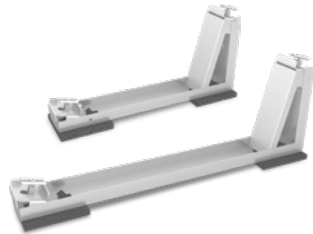


The integrated ballast tray eliminates additional components.

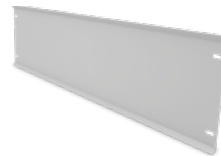
Components



S-Rock 15° Front/End
First and last row module support element with ballast tray



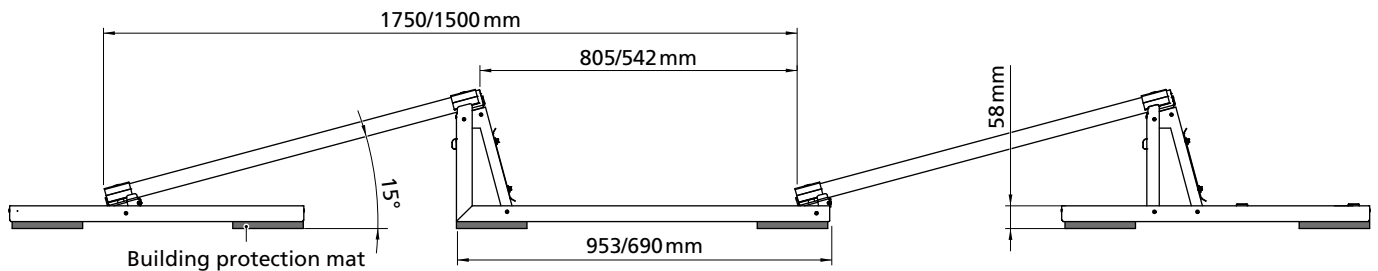
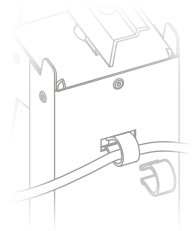
S-Rock 15°
Module support element for one-sided elevation with ballast tray in two lengths



Windbreaker 15°
Wind deflection on the rear of S-Rock 15° systems



Cable Management
S-Rock cable clips for fastening module cables



Technical data

S-Rock	
Scope of application	Flat roofs <5° with membrane, bitumen and concrete roofs
Fastening type/roof fixture	On-roof with potential ballast; no roof penetration
Requirements	<ul style="list-style-type: none"> ▶ Permissible module dimensions (L×W×H): 1386-1685 × 950-1100 × 30-50 mm ▶ Module approved for corner clamping (see k2-systems.com/en/approved-modules)
Technical specifications	<ul style="list-style-type: none"> ▶ Thermal separation after 8 adjacent or consecutive modules ▶ Minimum clearance to roof edge 700 mm ▶ Row spacing, fixed: approx. 1.75/1.5 m (depending on module width)
Inclination angle	15°
Material	<ul style="list-style-type: none"> ▶ Aluminium: <ul style="list-style-type: none"> · S-Rock, Windbreaker (EN AW-5754 H22/H32) · Module clamps (EN AW-6063 T66) ▶ Building protection mat with or without aluminium lining (PUR-bound rubber granules) ▶ Small parts: Stainless steel A2-70

Note: The illustration of the S-Rock 15° above (with a row spacing of 1.75 m) shows the dimensions for a shadow-free installation design at a latitude of ≤48.8 °N. This design ensures that the modules (with a module width of up to 1 000mm) are shade free at noon (12 pm) on 21st December. Many best practice case examples have confirmed that in 80 % of customers surveyed, these dimensions achieve an optimum ratio between surface utilisation and yield. That is why we have the S-Rock System in these dimensions in stock for you and available for delivery at all times. Of course, upon request, we also provide all S-Rock 15° systems in your desired length for a row spacing of <1.75 m. Larger row spacings are currently not available, as this would require a separate static design including an expert wind report.